

USER ASSEMBLY + GUIDE

**EN131-PROFESSIONAL
WIDE STEP LADDER WITH
FULLY ENCLOSED WORKING AREA**

**LFI PRO
WIDE STEP**

PART OF THE PRO RANGE

LFI
○

**THIS ASSEMBLY
GUIDE IS INTENDED
TO PROVIDE YOU
WITH STEP-BY-STEP
INSTRUCTIONS ON
HOW TO ASSEMBLE
YOUR PRO WIDE
STEP LADDER WITH
EASE AND SAFETY.**

You should read and understand all notes and diagrams, before commencing assembly. Personnel should be qualified or competent to assemble the PRO Wide Step. Remember to do a risk assessment of the work to be carried out prior to commencing.

This wide step ladder shall only be used according to this manual without any modification.

CONTENTS	PAGE
Assembly Guide	3
Risk Assessment Form	4

HANDRAIL ASSEMBLY ASSEMBLY PROCEDURE

COMPONENTS

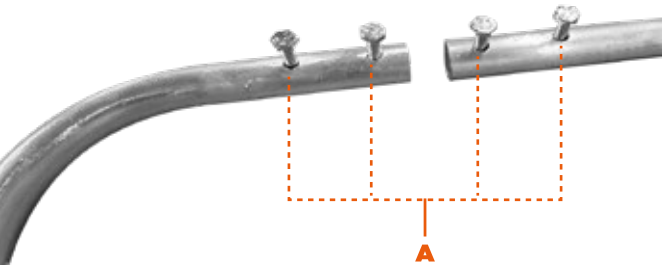
2x handrails
8x M6 40mm bolts
8x M6 nuts

TOOLS REQUIRED

2x 10mm spanners

1.0 STEP

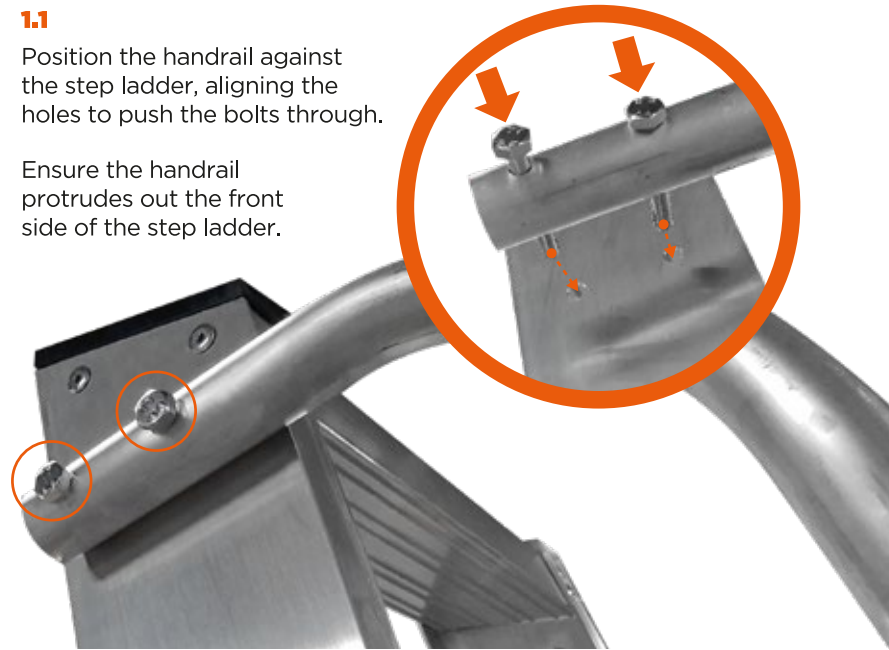
Insert four M6 x 40mm bolts into the four handrail holes 'A'.



1.1

Position the handrail against the step ladder, aligning the holes to push the bolts through.

Ensure the handrail protrudes out the front side of the step ladder.



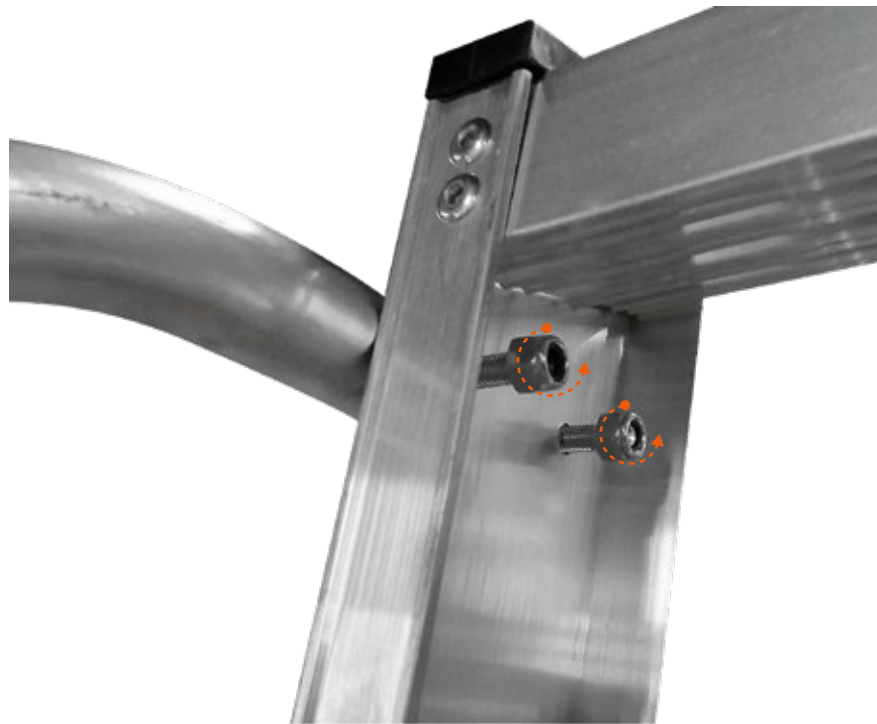
2.0 STEP

Use 4x M6 nuts to fix the M6 x 40mm bolts in place on the inside of the step ladder.

Don't over tighten. Over tightening may bend the handrail tube.

3.0 STEP

Repeat steps 1 to 3 of the assembly guide for the opposite handrail.



RISK ASSESSMENT COMPLETION FORM

Inspector _____ Date & time _____
 Location & Site _____ Inspection No. _____
 Main activity/situation _____ Signature _____

NOTES

A Personnel at Risk

- Employee
- Contractor
- Public

B Severity

- Negligible
- Minor injury
- Serious injury
- Major injury

C Probability

- Impossible
- Improbable
- Remote
- Occasional
- Probable
- Frequent

INSPECTION NO.	ACTIVITY / LOCATION MATERIALS / TOOLS ETC.	HAZARDS IDENTIFIED	A	B	C	RISK RATING (BxC)	SAFETY EQUIPMENT TO BE USED	B	C	RISK RATING (BxC)	ACTION BY

RISK VALUE KEY

1-4 ACCEPTABLE. 5-9 **MEDIUM:** Investigate and where practicable reduce the risk. **10-14 HIGH:** Action must be taken to reduce risk.
15-24 VERY HIGH: Risk is too high to start work or continue, work must be stopped.



**LFI - Ladder & Fencing Industries
(Newent) Ltd.**

Horsefair Lane, Newent,
Gloucestershire GL18 1RP

Email: info@lfi-ladders.co.uk

 britishladders.co.uk     

